



Can Tooling

2 Pieces Metal Can Tooling

Category

CB-CERATIZIT	
Company Introduction	04
Core Value	06
Production Site of Can Tooling	07

Product Category of Can Tooling	
Cupper	08
Necker	09
Body Maker	10
Inspection and Service	12
Sales Network	13
Competitive advantage	14

About CB-CERATIZIT

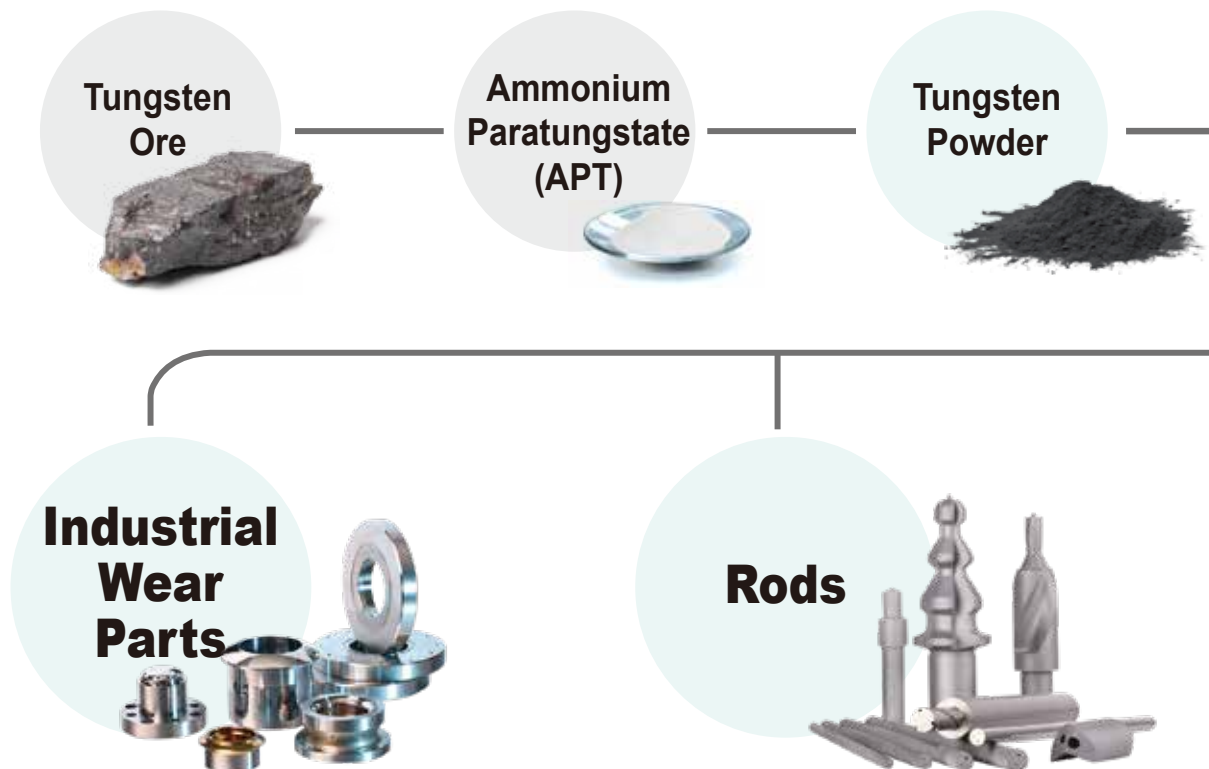
CB-CERATIZIT is the Asian market leader in carbide rod blanks, industrial wear parts, wood & stone applications, and specific cutting tool segments through quality products, fast delivery and responsive customer service.

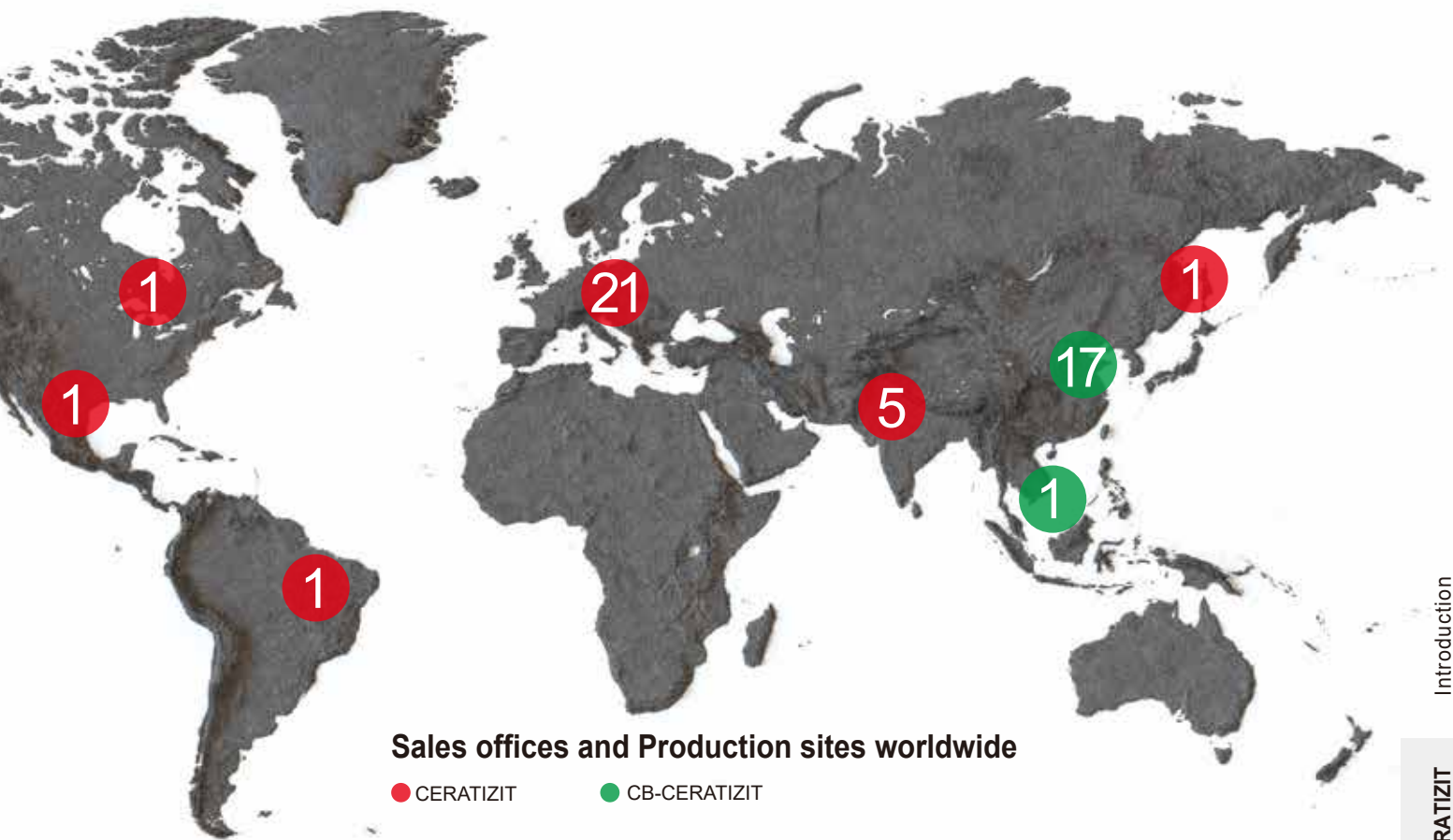
CB-CERATIZIT offers global production and technological supports as well as localised services.

CB-CERATIZIT combined has more than 130 years of tungsten carbide industry experience. We are confident CB-CERATIZIT is the best partner for our growth oriented customers by providing carbide solutions.



CB-CERATIZIT Industry Chain





Ready to Press Powder



Tungsten Carbide



Wood and Stone



Cutting Tools



CB-CERATIZIT

We value customer feedback

We help to shape the industry trend

We improve continuously

We are CB-CERATIZIT

1 **C**ustomer Service Grade Selection

Guide our customer to apply best solution for success.

2 **B**reakthrough Achieve Outperformance

Enable our customer to achieve outperformance is our key objective.

3 **C**ompetitiveness Enhance Competitiveness

Strengthen the competitiveness of our customer is our long term goal.

4 **T**ooling Mold and Die

Provide the precise tooling with excellent production capability.



Production Site of Can Tooling

Established in 1997, CB-CERATIZIT Precision Mold and Die Factory meets customers' rapid and large demand with its profound knowledge of tungsten carbide, latest technology and R&D capability.

The booming demand of metal packing industry together with its rigorous requirement of precision make the uniqueness and profession of can tooling industry.

With the goal to high end precision and local production,

CB-CERATIZIT provides Copper,

Body Maker and Necker solution to two pieces Can Makers.

We also provide non-magnetic carbide grade to solve the

"Sensor Misjudgement" and professional can tooling technological support and seminar.

With its ISO9001, ISO14001 and OHSAS18001 certification,

CB-CERATIZIT integrates the technology from Europe and Brazil and global sales network.

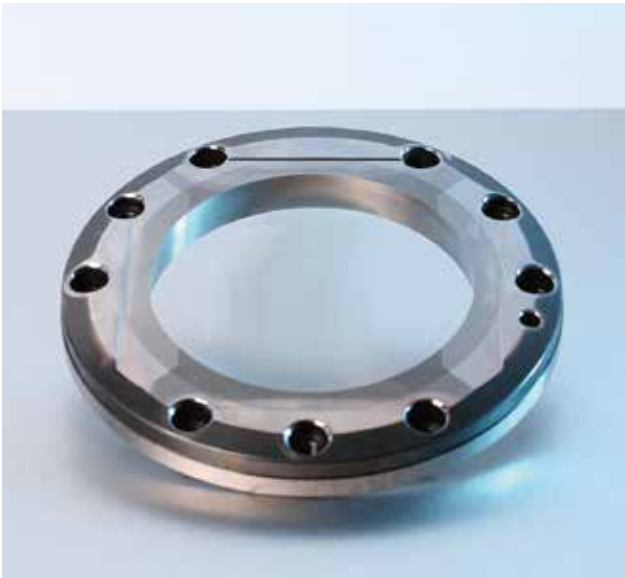
We would like to share our value and provide our professional and standardized solution to our partners in metal packaging industry.



Copper



Each aluminum coin is made from the copper machine with high speed punching. With our high quality Can Tooling, we could help you to extend the tool life and to reduce the production cost.

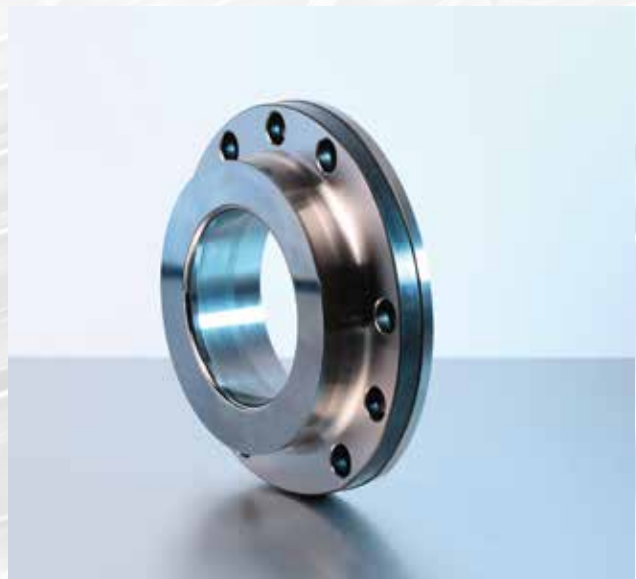
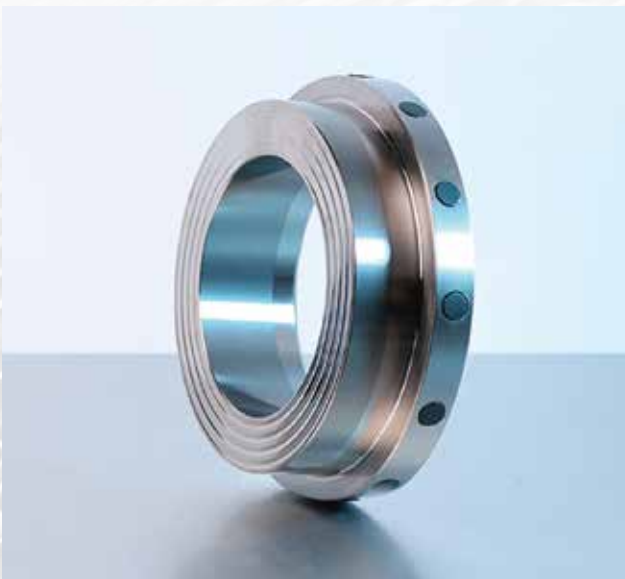


Cut Edge Die

Material	Grade
Steel + Carbide	Steel: 4140
	Carbide: ZG23 · ZG24 · ZN20

Die Center

Material	Grade
Steel + Carbide	Steel: 4140
	Carbide: ZG24 · ZN20



Draw Pad

Material	Grade
Steel + Carbide	Steel: 4140
	Carbide: ZG24 · ZN20

Blank Draw Die

Material	Grade
Steel + Carbide	Steel: 4140
	Carbide: ZG24 · ZN20

Necker



With High-Precision equipment and rigor machining, CB-CERATIZIT provides Necker tooling of both carbide and ceramic, with perfect profile to shape the 2-piece Cans.



Necking Die

Material	Grade
Carbide	ZG23
Ceramic	YZ110HS · YZHSB



Knock Out

Material	Grade
Steel	M2HSS
Ceramic	YZ110HS · YZHSB

Body Maker

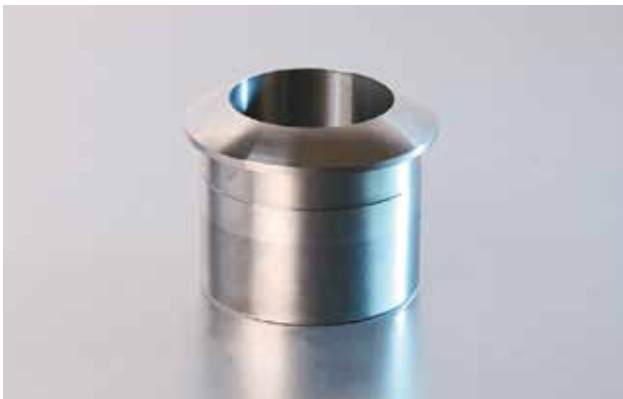
Body Maker is the critical process in the Can production line. The Can Tooling in the body maker are the easiest part to wear out. CB-CERATIZIT not only provides the new tooling but also provide regrind service. With accuracy of tolerance, recommendation of carbide grade and the tool design, CB-CERATIZIT shows the passion and professional toward can tooling.





Ironing Die 、Redraw Die

Material	Grade
Steel	Steel: H13
+ Carbide	Carbide: ZG12 、ZS12 、ZS20 、ZN20



Redraw Sleeve(Cup Holder)

Material	Grade
Steel	Steel: A2
+ Carbide	Carbide: ZG23 、ZN20
Ceramic	YZ110HS 、YZHSB



Punch Sleeve 、
Punch Sleeve Integrated

Material	Grade
Carbide	ZG23 、ZN10 、ZN20

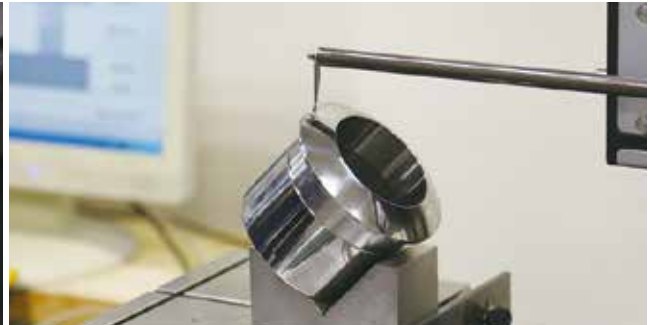
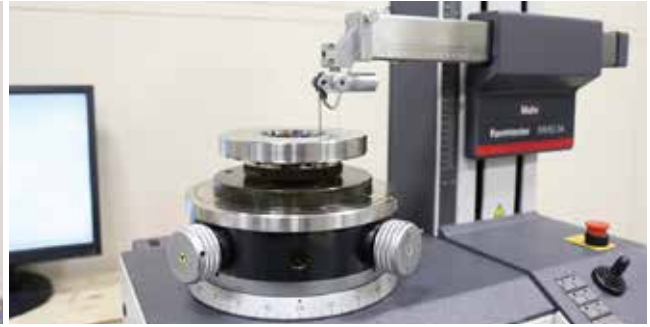


Punch Nose 、Dome Plug 、
Outer Ring(Clamping Ring)

Die name	Material	Grade
Punch Nose	Steel	A2+coating
Dome Plug	Steel	D2+coating
Outer Ring (Clamping Ring)	Steel	Steel: A2
	+ Carbide	Carbide: ZG23 、ZN10 、ZN20
	Ceramic	YZ110HS 、YZHSB

Inspection

CB-CERATIZIT uses high end inspection machine to ensure the Can Tooling to meet the tolerance and customers' requirement with accuracy, stability and efficiency.



Machining

CB CERATIZIT achieves demanding standard by not allowing a single micron deviation. Every step in every piece of product works in extremely detail with strictest standard. We are proud of not only our capabilities but also how we manage working on our products.



Sales Network in Asia

CB-CERATIZIT has 15 sales branches in Asia so that we could provide rapid service and technical support to bring higher value to 2-pieces metal packaging industry.



CB-CERATIZIT Strength



Service

network in major cities to meet each markets requirement and service and technical support.

Material Professional

Provide the suitable grade to industrial customers and keep innovating the material to cope with the rapid change of technology.

03 Technical Support

Increase the Canning quality and production efficiency with Can Tooling solution and technical support.

Regrind Service

Provide the Regrind service to prolong the Tooling life and deal with urgent situation to save the cost of Can Tooling.

gration Production

Discise Can Tooling with ISO control from carbide powder, tools machining.



For More Information, Please Contact Us:

CB - CERATIZIT (Taiwan) Group Head Office

ADD: 3F., NO. 217, Sec. 2, New Taipei Blvd., Hsin Chuang Dist.,
New Taipei City 24250, Taiwan (R.O.C.)

TEL: + 886-2-8521-6688

FAX: + 886-2-8521-1011

E-mail: sales@cbceratizit.com

CB - CERATIZIT (Xiamen) China Head Office

ADD: 69 Xingxi Rd, Xinglin, Jimei, Xiamen, China 361022

TEL: +86-592-666-1000

FAX: +86-592-621-9599

E-mail: sales@cbceratizit.com

